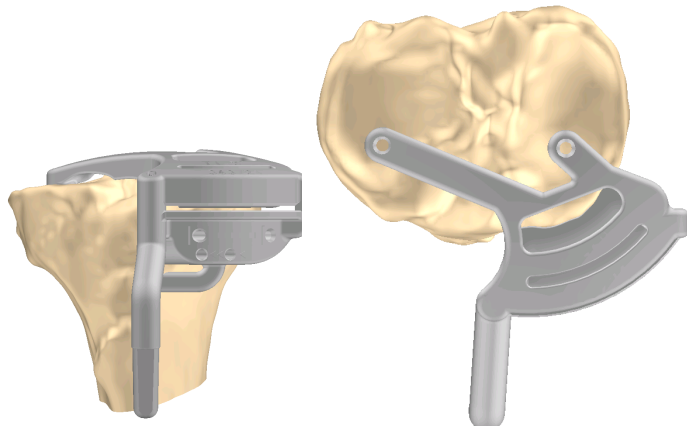


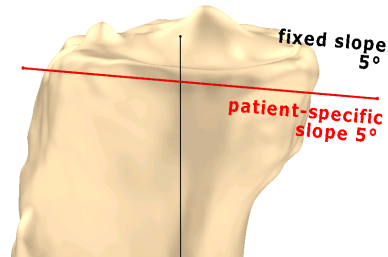
Knee: right

Tibial Images



L M

Tibial Cut Guide Position



M

Posterior Slope

Native medial slope: 4°

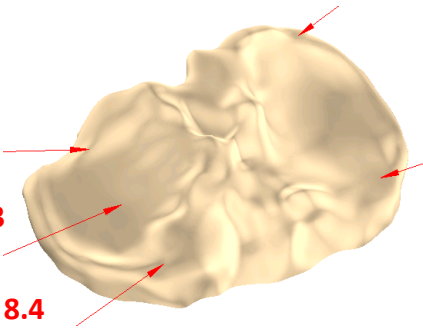
Fixed slope: 5° Patient-specific slope: 5°

PL: 6.2/ 6.2

†LL: 5.3/ 5.3

AL: 8.4/ 8.4

L



PM: 7.3/ 7.3

AM: 4.3/ 4.3

M

Tibial Bone Resection

Osteophytes included in values

†When the LL ≥ 7.0mm propose using -2 cut block

LL: Lowest point on lateral plateau

*Indicates a point 5mm from edge.

5° fixed slope resection/5° patient-specific resection

Medial/Lateral Insert Offset

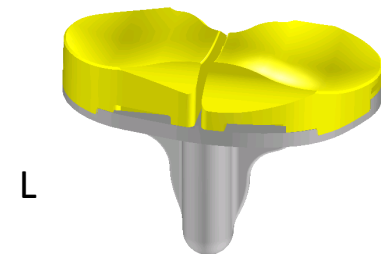
Based on the patient's measured medial to lateral distal femoral implant offset, the lateral side is **3.5mm** thicker than the medial side to achieve neutral mechanical alignment.

Supplied Lateral Insert Thickness (mm):

Lateral Insert A: **9.6**

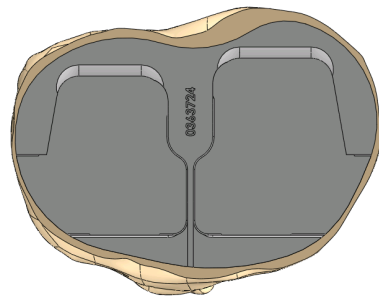
Lateral Insert B: **10.6**

Lateral Insert C: **11.6**



L

M



L

M

Tibial Tray Placement

Stem Drill & Keel Size (mm): **14**

Osteophytes removed

Tibial Baseplate is designed to 5° Tibial Slope

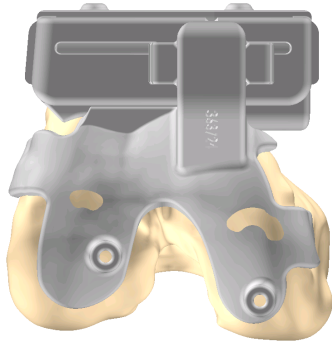
Note: Bone resection values do not include cartilage thickness or account for bone lost to saw blade cut.

All resection values in mm.

iView patient-specific images and values are intended as reference material and not a substitute for intra-operative evaluation by a surgeon. During surgery, physicians should verify that the images provided accurately reflect the patient's anatomy. Please reference the iTotal G2 surgical technique guide for specific implantation instructions. The ConforMIS iTotal iJigs are designed and produced to be patient-specific. The iTotal G2 is designed to achieve neutral mechanical axis alignment.

USA Federal Law restricts the use of this device to sale by or on the order of a physician. The ConforMIS G2 Cruciate Retaining Total Knee Replacement system (iTotal G2) is intended for use by fully trained physicians. Prior to use of a ConforMIS device, please review the instructions for use and surgical technique for a complete listing of indications, contraindications, warnings, precautions, and directions for use.

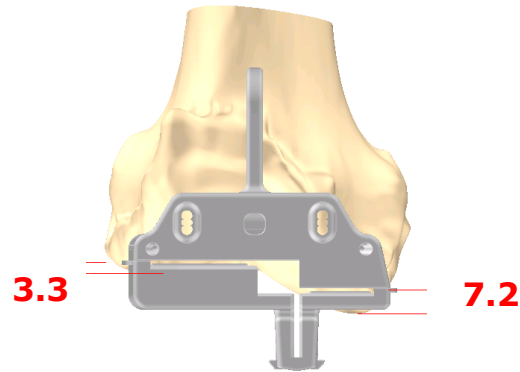
Femoral Images



L M

Femoral Position

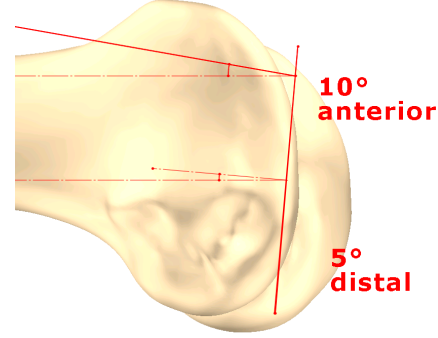
Properly positioning F3 will result in distal femoral cut(s) that are perpendicular to the neutral mechanical axis in the coronal plane.



L M

Distal Femoral Cuts

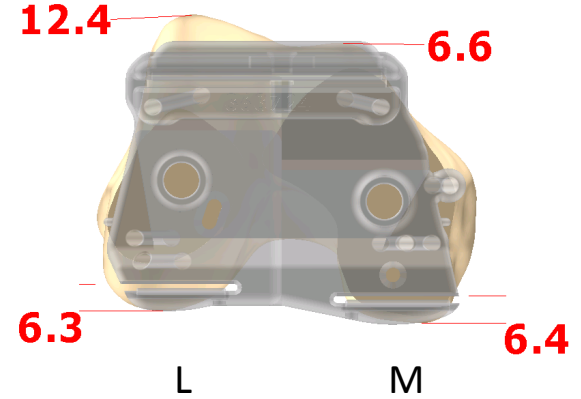
Osteophytes *included* in values



L

Flexion for Distal and Anterior Cuts

Osteophytes *removed*



L M

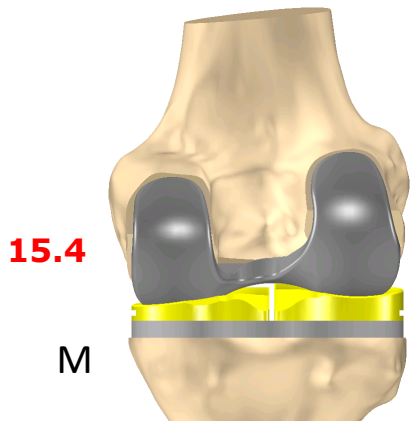
Femoral AP Cuts

Osteophytes *removed*. Resection values reflect placement of the AP Cut Guide such that the anterior and posterior resection planes are parallel to the transepicondylar axis (F4 is at 0°)

Posterior M/L implant offset: 3.8mm

Proposed Implant Placement

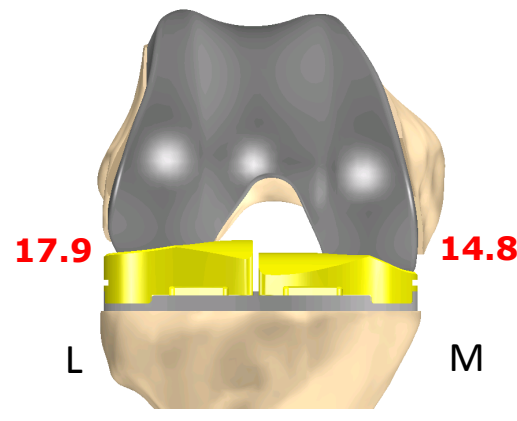
Osteophytes *removed*



M L

Posterior View

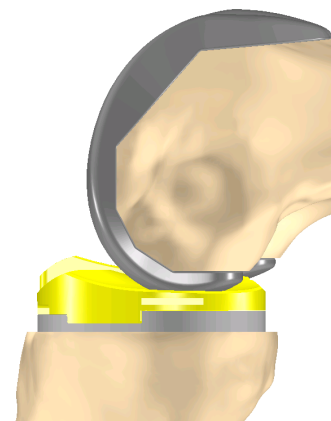
Values are implant composite thickness



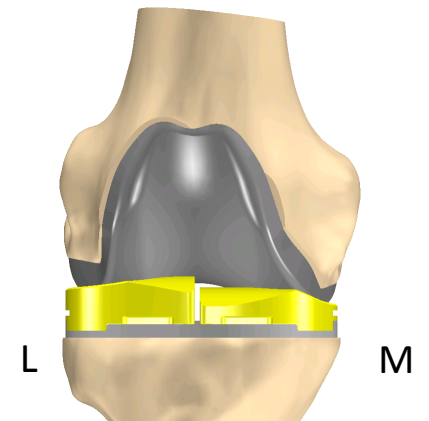
L M

Anterior View @90°

Values are implant composite thickness



Medial View @90°



L M

Anterior View @0°

Note: Bone resection values do not include cartilage thickness or account for bone lost to saw blade cut.

All resection values in mm.